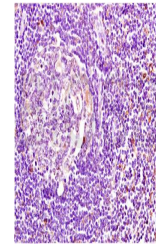


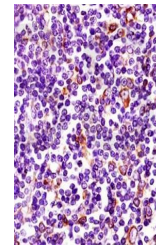
Product Datasheet

MHC Class II antibody (orb101661)

Description	MHC Class II antibody
Species/Host	Rabbit
Reactivity	Human, Mouse
Conjugation	Unconjugated
Tested Applications	ELISA, IF, IHC-Fr, IHC-P
Immunogen	KLH conjugated synthetic peptide derived from human MHC Class II (201-296/296 aa)
Target	MHC Class II
Preservatives	0.01M TBS(pH7.4) with 1% rAlbumin, 0.03% Proclin300 and 50% Glycerol.
Form/Appearance	Liquid
Concentration	1mg/ml
Storage	Shipped at 4°C. Store at -20 °C for one year. Avoid repeated freeze/thaw cycles.
Note	For research use only
Isotype	IgG
Clonality	Polyclonal
MW	29 kDa
Uniprot ID	P28068
Expiration Date	12 months from date of receipt.



Paraffin-embedded human pancreatic cancer...



IHC-P of human pancreatic cancer tissue ...