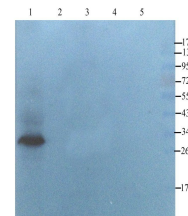


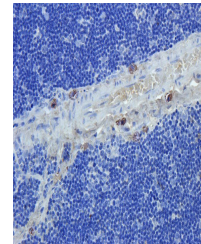
Product Datasheet

CD274 antibody (orb10162)

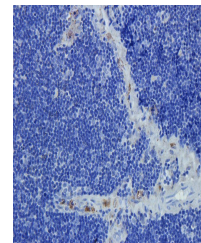
Description	CD274 antibody
Species/Host	Rabbit
Reactivity	Human, Mouse, Rat
Conjugation	Unconjugated
Tested Applications	ELISA, IHC-P, WB
Immunogen	KLH conjugated synthetic peptide derived from human CD274. Please contact us for the exact immunogen sequence. The peptide is available as orb374702.
Target	CD274
Form/Appearance	10 mM PBS, 0.02% sodium azide
Concentration	- 100 µg (in 200 µl): 0.5 mg/ml- 200 µg (in 400 µl): 0.5 mg/ml
Storage	Store at 4°C for up to two weeks. For long term storage, aliquot and store at -20°C, avoid freeze/thaw cycles.
Note	For research use only
Isotype	IgG
Clonality	Polyclonal
Purity	Polyclonal antibodies are purified by peptide affinity chromatography
MW	33 kDa
Uniprot ID	Q9EP73
Entrez	29126
Dilution Range	IHC-P: 1:50-300 (based on 0.5mg/ml), WB: 1:100-500
Expiration Date	12 months from date of receipt.



Western blot analysis of mouse heart (la...



Immunohistochemical staining of paraffin...



IHC-P staining of rat thymus tissue usin...