

Product Datasheet

Desmocollin 1 antibody (orb101537)

Description

Desmocollin 1 antibody

Species/Host

Rabbit

Reactivity

Human, Mouse, Rat

Conjugation

Unconjugated

Tested

ELISA, ICC, IF, IHC-P, WB

Applications
Immunogen

KLH conjugated synthetic peptide derived from human Desmocollin 1. Please contact us for the exact immunogen sequence. The peptide is available as orb374797.

Target

Desmocollin 1

Form/Appearance

10 mM PBS, 0.02% sodium azide

Concentration

- 100 µg (in 200 µl): 0.5 mg/ml- 200 µg (in 400 µl): 0.5 mg/ml

Storage

Store at 4°C for up to two weeks. For long term storage, aliquot and store at -20°C, avoid freeze/thaw cycles.

Note

For research use only

Isotype

IgG

Clonality

Polyclonal

Purity

Polyclonal antibodies are purified by peptide affinity chromatography

MW

100 kDa

Uniprot ID
[P55849](#), [Q08554](#)
NCBI
[004939](#), [004948](#)
Entrez
[1823](#)
Dilution Range

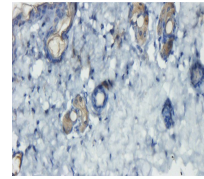
IF/ICC: 1:100, IHC-P: 1:200, WB: 1:200-1000

Expiration Date

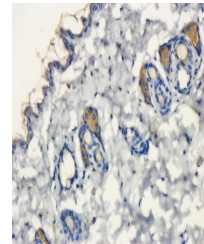
12 months from date of receipt.



Immunohistochemical staining of mouse sk...



Immunohistochemical staining of mouse sk...



IHC-P image of rat pancreas tissue using...

