
Product Datasheet

SERPING1 antibody (orb101493)

Description

SERPING1 antibody

Species/Host

Rabbit

Reactivity

Human, Mouse, Rat

Conjugation

Unconjugated

Tested Applications

ELISA, IHC-P, WB

Immunogen

KLH conjugated synthetic peptide derived from human SERPING1. Please contact us for the exact immunogen sequence. The peptide is available as orb374798.

Target

SERPING1

Form/Appearance

10 mM PBS, 0.02% sodium azide

Concentration

- 100 µg (in 200 µl): 0.5 mg/ml- 200 µg (in 400 µl): 0.5 mg/ml

Storage

Store at 4°C for up to two weeks. For long term storage, aliquot and store at -20°C, avoid freeze/thaw cycles.

Note

For research use only

Isotype

IgG

Clonality

Polyclonal

Purity

Polyclonal antibodies are purified by peptide affinity chromatography

MW

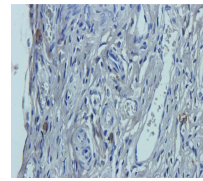
55 kDa

Uniprot ID
[Q6P734](#), [P97290](#), [P05155](#)
NCBI
[000062](#), [000053](#)
Entrez
[710](#)
Dilution Range

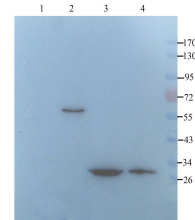
IHC-P: 1:50-300, WB: 1:100-2000

Expiration Date

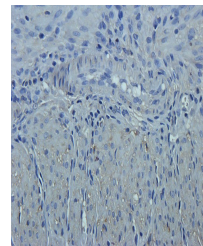
12 months from date of receipt.



Immunohistochemical staining of rat uter...



WB analysis of rat colon (lane 1), mouse...



IHC-P image of rat uterus tissue using S...