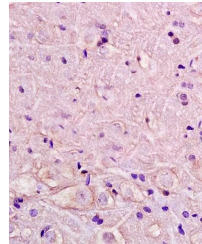


Product Datasheet

alpha 1 Adrenergic Receptor antibody (orb10142)

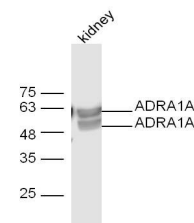
Description	alpha 1 Adrenergic Receptor antibody
Species/Host	Rabbit
Reactivity	Human, Mouse, Rat
Conjugation	Unconjugated
Tested Applications	WB
Immunogen	KLH conjugated synthetic peptide derived from human Alpha-1A adrenergic receptor (201-300/466 aa)
Target	ADRA1A
Preservatives	0.01M TBS(pH7.4) with 1% rAlbumin, 0.03% Proclin300 and 50% Glycerol.
Form/Appearance	Liquid
Concentration	1mg/ml
Storage	Shipped at 4°C. Store at -20 °C for one year. Avoid repeated freeze/thaw cycles.
Note	For research use only
Isotype	IgG
Clonality	Polyclonal
MW	51 kDa
Uniprot ID	P35348
Dilution Range	WB=1:500-2000
Expiration Date	12 months from date of receipt.



Immunohistochemical analysis of formalin...



Western blot analysis of U937 Cell (Huma...



Western blot analysis of kidney (Mouse) ...