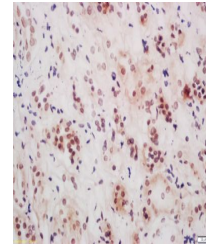


Product Datasheet

NS5ATP9 antibody (orb101382)

Description	NS5ATP9 antibody
Species/Host	Rabbit
Reactivity	Rat
Conjugation	Unconjugated
Tested Applications	ELISA, IF, IHC-Fr, IHC-P
Immunogen	KLH conjugated synthetic peptide derived from human NS5ATP9/KIAA0101 (51-111/111 aa)
Target	NS5ATP9
Preservatives	0.01M TBS(pH7.4) with 1% rAlbumin, 0.03% Proclin300 and 50% Glycerol.
Form/Appearance	Liquid
Concentration	1mg/ml
Storage	Shipped at 4°C. Store at -20 °C for one year. Avoid repeated freeze/thaw cycles.
Note	For research use only
Isotype	IgG
Clonality	Polyclonal
MW	12 kDa
Uniprot ID	Q15004
Expiration Date	12 months from date of receipt.



Immunohistochemical staining of rat kidn...