
Product Datasheet

Filaggrin antibody (orb101353)

Description

Filaggrin antibody

Species/Host

Rabbit

Reactivity

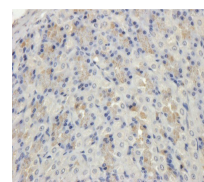
Human, Mouse, Rat

Conjugation

Unconjugated

Tested

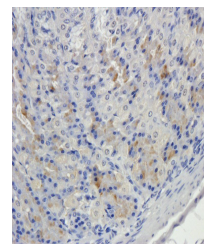
ELISA, IHC-P, WB

Applications


Immunohistochemical staining of paraffin...

Immunogen

KLH conjugated synthetic peptide derived from human Filaggrin. Please contact us for the exact immunogen sequence. The peptide is available as orb374800.



Immunohistochemical staining of paraffin...

Target

Filaggrin

Form/Appearance

10 mM PBS, 0.02% sodium azide

Concentration

- 100 µg (in 200 µl): 0.5 mg/ml- 200 µg (in 400 µl): 0.5 mg/ml

Storage

Store at 4°C for up to two weeks. For long term storage, aliquot and store at -20°C, avoid freeze/thaw cycles.

Note

For research use only

Isotype

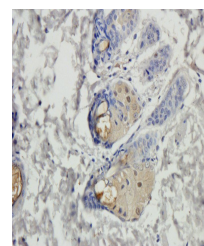
IgG

Clonality

Polyclonal

Purity

Polyclonal antibodies are purified by peptide affinity chromatography



IHC-P image of rat skin tissue using ant...

MW

~34 kDa

Uniprot ID
[P20930](#), [P11088](#)
NCBI
[002016](#), [002007](#), [11](#)
Entrez
[2312](#)
Dilution Range

IHC-P: 1:100-500 (based on 0.5 mg/ml), WB: 1:100-300

Expiration Date

12 months from date of receipt.