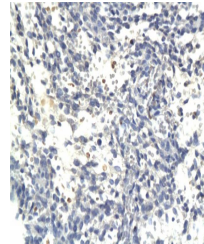


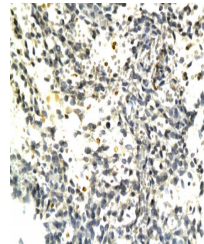
Product Datasheet

CYP19A1 antibody (orb10134)

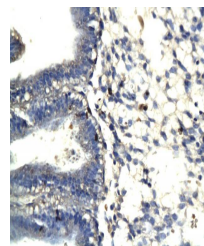
Description	CYP19A1 antibody
Species/Host	Mouse
Reactivity	Human
Conjugation	Unconjugated
Tested Applications	WB
Immunogen	KLH conjugated synthetic peptide derived from human Aromatase (51-150/503 aa)
Target	Aromatase
Preservatives	0.01M TBS(pH7.4) with 1% rAlbumin, 0.03% Proclin300 and 50% Glycerol.
Form/Appearance	Liquid
Concentration	1mg/ml
Storage	Shipped at 4°C. Store at -20 °C for one year. Avoid repeated freeze/thaw cycles.
Note	For research use only
Isotype	IgG
Clonality	Polyclonal
MW	55 kDa
Uniprot ID	P11511
Dilution Range	WB=1:500-2000
Expiration Date	12 months from date of receipt.



Immunohistochemical staining of paraffin...



IHC-p of human placenta tissue (orb10134...)



IHC-p of human placenta tissue (orb10134...)