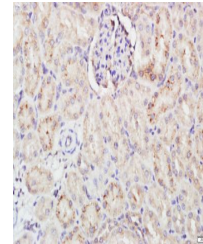


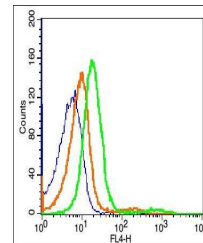
Product Datasheet

FCAR antibody (orb101318)

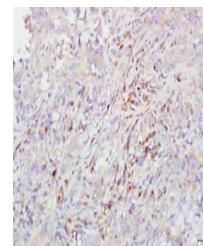
Description	FCAR antibody
Species/Host	Rabbit
Reactivity	Human, Rat
Conjugation	Unconjugated
Tested Applications	ELISA, IF, IHC-Fr, IHC-P
Immunogen	KLH conjugated synthetic peptide derived from human FCAR (131-230/287 aa)
Target	FCAR/CD89
Preservatives	0.01M TBS(pH7.4) with 1% rAlbumin, 0.03% Proclin300 and 50% Glycerol.
Form/Appearance	Liquid
Concentration	1mg/ml
Storage	Shipped at 4°C. Store at -20 °C for one year. Avoid repeated freeze/thaw cycles.
Note	For research use only
Isotype	IgG
Clonality	Polyclonal
MW	29 kDa
Uniprot ID	P24071
Expiration Date	12 months from date of receipt.



Immunohistochemical staining of rat kidn...



Flow cytometric analysis of MCF 7 Cells ...



Immunohistochemical staining of human lu...