
Product Datasheet

Aquaporin 9 antibody (orb10127)

Description

Aquaporin 9 antibody

Species/Host

Rabbit

Reactivity

Guinea pig, Human, Mouse, Rat

Conjugation

Unconjugated

Tested Applications

ICC, IF, IHC-P, WB

Immunogen

KLH conjugated synthetic peptide derived from human Aquaporin 9. Please contact us for the exact immunogen sequence. The peptide is available as orb12881.

Target

Aquaporin 9

Form/Appearance

10 mM PBS, 0.02% sodium azide

Concentration

- 100 µg (in 200 µl): 0.5 mg/ml- 200 µg (in 400 µl): 0.5 mg/ml

Storage

Store at 4°C for up to two weeks. For long term storage, aliquot and store at -20°C, avoid freeze/thaw cycles.

Note

For research use only

Isotype

IgG

Clonality

Polyclonal

Purity

Polyclonal antibodies are purified by peptide affinity chromatography

MW

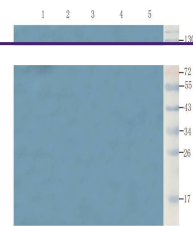
31 kDa

Uniprot ID
[O43315](#)
NCBI
[21](#), [31](#), [020980](#), [066190](#)
Entrez
[366](#)
Dilution Range

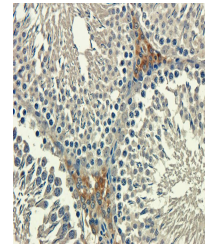
IF/ICC: 1:50-400, IHC-P: 1:50-400, WB: 1:200-2000

Expiration Date

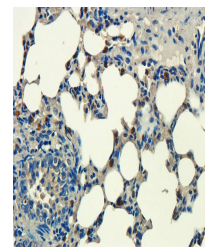
12 months from date of receipt.



WB analysis of rat liver (lane 1), rat b...



Immunohistochemical staining of rat test...



Immunohistochemical staining of guinea p...