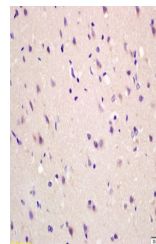


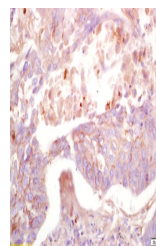
Product Datasheet

MAS1L antibody (orb101269)

Description	MAS1L antibody
Species/Host	Rabbit
Reactivity	Human, Rat
Conjugation	Unconjugated
Tested Applications	IHC-P
Immunogen	KLH conjugated synthetic peptide derived from human MAS1L (201-300/378 aa)
Target	MAS1L
Preservatives	0.01M TBS(pH7.4) with 1% rAlbumin, 0.03% Proclin300 and 50% Glycerol.
Form/Appearance	Liquid
Concentration	1mg/ml
Storage	Maintain refrigerated at 2-8°C for up to 2 weeks. For long term storage store at -20°C in small aliquots to prevent freeze-thaw cycles.
Note	For research use only
Isotype	IgG
Clonality	Polyclonal
MW	42 kDa
Uniprot ID	P35410
Dilution Range	IHC-P=1:100-500
Expiration Date	12 months from date of receipt.



IHC-P analysis of rat brain tissue using...



IHC-P analysis of human lung carcinoma u...