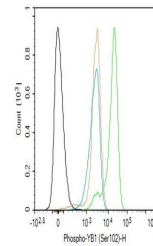


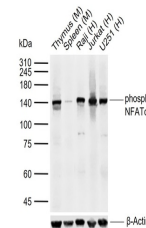
Product Datasheet

NFATc2 (phospho-Ser330) antibody (orb101236)

Description	NFATc2 (phospho-Ser330) antibody
Species/Host	Rabbit
Reactivity	Human, Mouse, Rat
Conjugation	Unconjugated
Tested Applications	FC, ICC, IF, IHC-P, WB
Immunogen	KLH conjugated Synthesised phosphopeptide derived from human NFATc2 around the phosphorylation site of Ser330 (DP(p-S)PV)
Target	phospho-NFATc2 (Ser330)
Preservatives	0.01M TBS(pH7.4) with 1% rAlbumin, 0.03% Proclin300 and 50% Glycerol.
Form/Appearance	Liquid
Concentration	1mg/ml
Storage	Maintain refrigerated at 2-8°C for up to 2 weeks. For long term storage store at -20°C in small aliquots to prevent freeze-thaw cycles.
Note	For research use only
Isotype	IgG
Clonality	Polyclonal
MW	100 kDa
Uniprot ID	Q13469
Dilution Range	WB=1:500-2000, IHC-P=1:100-500, ICC=1:100, Flow-Cyt=1ug/Test
Expiration Date	12 months from date of receipt.



Flow cytometry of Molt4(black line).Prim...



Western blot:Lane 1:Mouse Thymus;Lane 2:...