
Product Datasheet

HE4 antibody (orb101171)

Description

HE4 antibody

Species/Host

Rabbit

Reactivity

Human, Mouse, Rat

Conjugation

Unconjugated

Tested

ELISA, ICC, IF, IHC-P, WB

Applications
Immunogen

KLH conjugated synthetic peptide derived from human HE4. Please contact us for the exact immunogen sequence. The peptide is available as orb374802.

Target

HE4

Form/Appearance

10 mM PBS, 0.02% sodium azide

Concentration

- 100 µg (in 200 µl): 0.5 mg/ml- 200 µg (in 400 µl): 0.5 mg/ml

Storage

Store at 4°C for up to two weeks. For long term storage, aliquot and store at -20°C, avoid freeze/thaw cycles.

Note

For research use only

Application notes

This antibody against Human, Mouse, Rat

Isotype

IgG

Clonality

Polyclonal

Purity

Polyclonal antibodies are purified by peptide affinity chromatography

MW

15 kDa

Uniprot ID
[Q9DAU7](#), [Q8CHN3](#), [A8K2M3](#)
NCBI
[080599](#), [026323](#)
Entrez
[67701](#)
Dilution Range

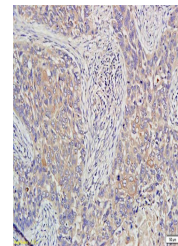
IF/ICC: 1:100, WB: 2 µg/ml, IHC-P: 1:100

Expiration Date

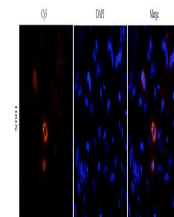
12 months from date of receipt.



Western blot analysis of rat endometrium...



IHC-P of human lung cancer using HE4 ant...



IF image of human endometrial cancer tis...