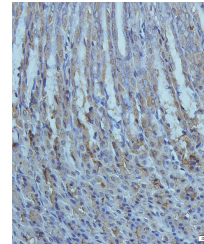


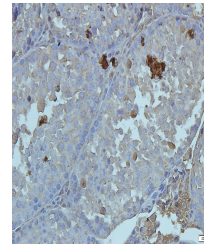
Product Datasheet

Cryopyrin antibody (orb101128)

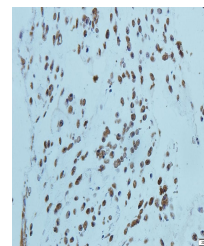
Description	Cryopyrin antibody
Species/Host	Rabbit
Conjugation	Unconjugated
Tested Applications	IHC-P
Immunogen	KLH conjugated synthetic peptide derived from human Cryopyrin. Please contact us for the exact immunogen sequence. The peptide is available as orb374803.
Target	Cryopyrin
Form/Appearance	10 mM PBS, 0.02% sodium azide
Concentration	- 100 µg (in 200 µl): 0.5 mg/ml- 200 µg (in 400 µl): 0.5 mg/ml
Storage	Store at 4°C for up to two weeks. For long term storage, aliquot and store at -20°C, avoid freeze/thaw cycles.
Note	For research use only
Isotype	IgG
Clonality	Polyclonal
Purity	Polyclonal antibodies are purified by peptide affinity chromatography
MW	118 kDa
Uniprot ID	Q8R4B8 , Q96P20
NCBI	001073289 , 21 , 001079821 , 11
Entrez	114548
Dilution Range	IHC-P: 1:100-1:500
Expiration Date	12 months from date of receipt.



Immunohistochemical staining of rat stom...



IHC-P staining of mouse testis tissue us...



IHC-P image of rat colon tissue using an...