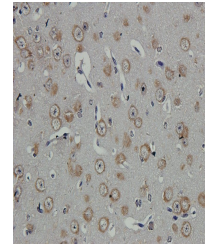


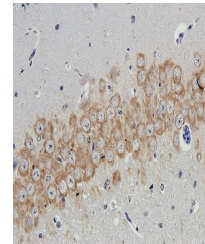
Product Datasheet

Beta-2-MG antibody (orb100920)

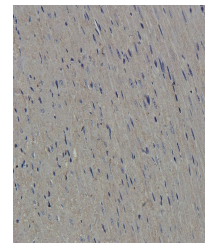
Description	Beta-2-MG antibody
Species/Host	Rabbit
Reactivity	Human, Mouse
Conjugation	Unconjugated
Tested Applications	IHC-P
Immunogen	KLH conjugated synthetic peptide derived from human beta 2 Microglobulin (51-119/119 aa)
Target	beta 2 Microglobulin
Preservatives	0.01M TBS(pH7.4) with 1% rAlbumin, 0.03% Proclin300 and 50% Glycerol.
Form/Appearance	Liquid
Concentration	1mg/ml
Storage	Shipped at 4°C. Store at -20 °C for one year. Avoid repeated freeze/thaw cycles.
Note	For research use only
Isotype	IgG
Clonality	Polyclonal
MW	12 kDa
Uniprot ID	P61769
Dilution Range	IHC-P=1:100-500
Expiration Date	12 months from date of receipt.



Immunohistochemical staining of paraffin...



Immunohistochemical staining of guinea p...



IHC-P staining of mouse heart tissue using...