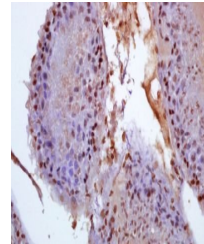


Product Datasheet

BCAR1 (phospho-Tyr410) antibody (orb100914)

Description	BCAR1 (phospho-Tyr410) antibody
Species/Host	Rabbit
Reactivity	Rat
Conjugation	Unconjugated
Tested Applications	ELISA, IF, IHC-Fr, IHC-P
Immunogen	KLH conjugated Synthesised phosphopeptide derived from human BCAR1 around the phosphorylation site of Tyr410 (GV(p-Y)AV)
Target	phospho-BCAR1 (Tyr410)
Preservatives	0.01M TBS(pH7.4) with 1% rAlbumin, 0.03% Proclin300 and 50% Glycerol.
Form/Appearance	Liquid
Concentration	1mg/ml
Storage	Shipped at 4°C. Store at -20 °C for one year. Avoid repeated freeze/thaw cycles.
Note	For research use only
Isotype	IgG
Clonality	Polyclonal
MW	93 kDa
Uniprot ID	P56945
Expiration Date	12 months from date of receipt.



Immunohistochemical analysis of formalin...