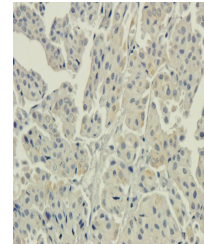


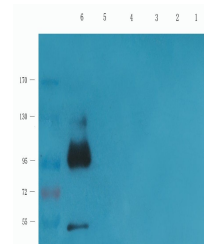
Product Datasheet

AHI1 antibody (orb100832)

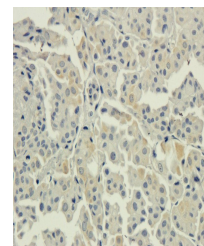
Description	AHI1 antibody
Species/Host	Rabbit
Reactivity	Human, Mouse, Rat
Conjugation	Unconjugated
Tested Applications	IHC-P, WB
Immunogen	KLH conjugated synthetic peptide derived from human AHI1. Please contact us for the exact immunogen sequence. The peptide is available as orb12933.
Target	AHI1
Form/Appearance	10 mM PBS, 0.02% sodium azide
Concentration	- 100 µg (in 200 µl): 0.5 mg/ml- 200 µg (in 400 µl): 0.5 mg/ml
Storage	Store at 4°C for up to two weeks. For long term storage, aliquot and store at -20°C, avoid freeze/thaw cycles.
Note	For research use only
Isotype	IgG
Clonality	Polyclonal
Purity	Polyclonal antibodies are purified by peptide affinity chromatography
MW	137 kDa
Uniprot ID	Q8N157
Entrez	54806
Dilution Range	IHC-P: 1:50~1:300, WB: 1:100-800
Expiration Date	12 months from date of receipt.



Immunohistochemical staining of human br...



Western blot analysis of mouse brain (la...



Immunohistochemical staining of human br...