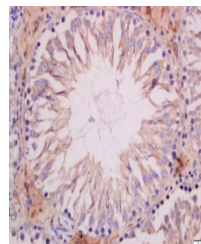


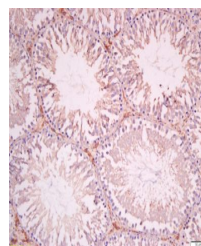
Product Datasheet

SOAT1 antibody (orb100781)

Description	SOAT1 antibody
Species/Host	Rabbit
Reactivity	Mouse, Rat
Conjugation	Unconjugated
Tested Applications	WB
Immunogen	KLH conjugated synthetic peptide derived from human SOAT1/ACAT1 (51-150/550 aa)
Target	SOAT1
Preservatives	0.01M TBS(pH7.4) with 1% rAlbumin, 0.03% Proclin300 and 50% Glycerol.
Form/Appearance	Liquid
Concentration	1mg/ml
Storage	Shipped at 4°C. Store at -20 °C for one year. Avoid repeated freeze/thaw cycles.
Note	For research use only
Isotype	IgG
Clonality	Polyclonal
MW	61 kDa
Uniprot ID	P35610
Dilution Range	WB=1:500-2000
Expiration Date	12 months from date of receipt.



Immunohistochemical staining of rat test...



Immunohistochemical staining of rat test...