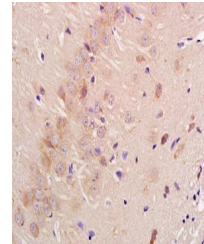


Product Datasheet

Contactin 3 antibody (orb100704)

Description	Contactin 3 antibody
Species/Host	Rabbit
Reactivity	Rat
Conjugation	Unconjugated
Tested Applications	IHC-P
Immunogen	KLH conjugated synthetic peptide derived from human Contactin 3 (301-400/1028 aa)
Target	Contactin 3
Preservatives	0.01M TBS(pH7.4) with 1% rAlbumin, 0.03% Proclin300 and 50% Glycerol.
Form/Appearance	Liquid
Concentration	1mg/ml
Storage	Shipped at 4°C. Store at -20 °C for one year. Avoid repeated freeze/thaw cycles.
Note	For research use only
Isotype	IgG
Clonality	Polyclonal
MW	108 kDa
Uniprot ID	Q9P232
Dilution Range	IHC-P=1:100-500
Expiration Date	12 months from date of receipt.



Immunohistochemical analysis of formalin...