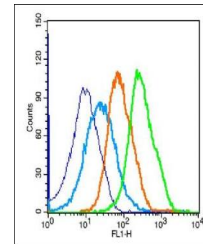


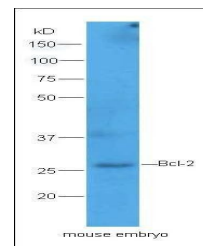
Product Datasheet

BCL2 antibody (orb100697)

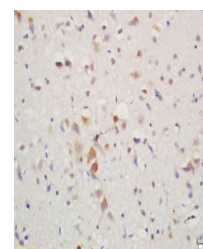
Description	BCL2 antibody
Species/Host	Rabbit
Reactivity	Human, Mouse, Rat, Sheep
Conjugation	Unconjugated
Tested Applications	FC, ICC, IF, IHC-P
Immunogen	KLH conjugated synthetic peptide derived from human Bcl-2 (161-239/239 aa)
Target	Bcl-2
Preservatives	0.01M TBS(pH7.4) with 1% rAlbumin, 0.03% Proclin300 and 50% Glycerol.
Form/Appearance	Liquid
Concentration	1mg/ml
Storage	Maintain refrigerated at 2-8°C for up to 2 weeks. For long term storage store at -20°C in small aliquots to prevent freeze-thaw cycles.
Note	For research use only
Isotype	IgG
Clonality	Polyclonal
MW	26 kDa
Uniprot ID	P49950
Dilution Range	IHC-P=1:100-500, ICC=1:100, IF=1:100-500, Flow-Cyt=1µg/Test, WB=1:500-2000, IHC-F=1:100-500
Expiration Date	12 months from date of receipt.



Flow cytometric analysis of mouse spleno...



Western blot analysis of mouse embryo ly...



Immunohistochemical staining of Mouse br...