

---

## Product Datasheet

### PLK4 antibody (orb100623)

**Description**

PLK4 antibody

**Species/Host**

Rabbit

**Reactivity**

Bovine, Canine, Equine, Human, Mouse, Porcine, Rat

**Conjugation**

Unconjugated

**Tested**

ELISA, ICC, IF, IHC-P, WB

**Applications**
**Immunogen**

KLH conjugated synthetic peptide derived from human PLK4. Please contact us for the exact immunogen sequence. The peptide is available as orb374807.

**Target**

PLK4

**Form/Appearance**

10 mM PBS, 0.02% sodium azide

**Concentration**

- 100 µg (in 200 µl): 0.5 mg/ml- 200 µg (in 400 µl): 0.5 mg/ml

**Storage**

Store at 4°C for up to two weeks. For long term storage, aliquot and store at -20°C, avoid freeze/thaw cycles.

**Note**

For research use only

**Isotype**

IgG

**Clonality**

Polyclonal

**Purity**

Polyclonal antibodies are purified by peptide affinity chromatography

**MW**

109 kDa

**Uniprot ID**
[Q64702](#), [B2GUY1](#), [O00444](#)
**NCBI**
[001190799](#), [001177728](#)
**Entrez**
[10733](#)
**Dilution Range**

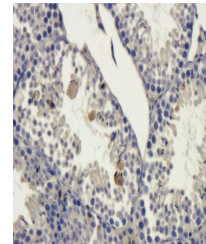
IHC-P: 1:100-300, IF/ICC: 1:100-300, WB: 1:100-800

**Expiration Date**

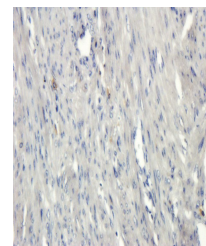
12 months from date of receipt.



Western blot analysis of rat pancreas (L...



Immunohistochemical staining of mouse te...



Immunohistochemical staining of paraffin...