

Product Datasheet

beta 1 Adrenergic Receptor antibody (orb10055)

Description

beta 1 Adrenergic Receptor antibody

Species/Host

Rabbit

Reactivity

Human, Mouse, Rat

Conjugation

Unconjugated

Tested Applications

IHC-P, WB

Immunogen

KLH conjugated synthetic peptide derived from human beta 1 Adrenergic Receptor. Please contact us for the exact immunogen sequence. The peptide is available as orb374700.

Target

beta 1 Adrenergic Receptor

Form/Appearance

10 mM PBS, 0.02% sodium azide

Concentration

- 100 µg (in 200 µl): 0.5 mg/ml- 200 µg (in 400 µl): 0.5 mg/ml

Storage

Store at 4°C for up to two weeks. For long term storage, aliquot and store at -20°C, avoid freeze/thaw cycles.

Note

For research use only

Isotype

IgG

Clonality

Polyclonal

Purity

Polyclonal antibodies are purified by peptide affinity chromatography

MW

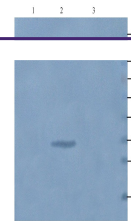
50 kDa

Uniprot ID
[P34971](#), [P18090](#), [P08588](#)
NCBI
[21](#), [000675](#), [000684](#), [11](#)
Entrez
[153](#)
Dilution Range

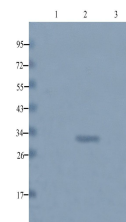
IHC-P: 1:100-300 (based on 0.5 mg/ml), WB: 1:100-500

Expiration Date

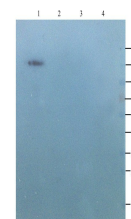
12 months from date of receipt.



WB analysis of rat kidney (lane 1), rat kidney (lane 2), rat kidney (lane 3) ...



Western blot analysis of rat liver (lane 1), rat liver (lane 2), rat liver (lane 3) ...



WB analysis of rat kidney (lane 1), rat kidney (lane 2), rat kidney (lane 3), rat kidney (lane 4) ...