
Product Datasheet

RNA polymerase II CTD repeat YSPTSPS (phospho-Ser5) antibody (orb100549)

Description

RNA polymerase II CTD repeat YSPTSPS


Species/Host

Rabbit

Reactivity

Human

Conjugation

Unconjugated

Tested Applications

FC

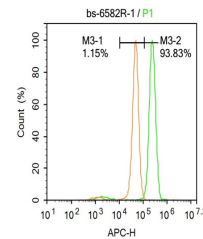
Immunohistochemical analysis of formalin...

Immunogen

KLH conjugated Synthesised phosphopeptide derived from human RNA polymerase II CTD around the phosphorylation site of Ser5 (PT(p-S)PS)

Target

RNA polymerase II CTD repeat YSPTSPS (phospho S5)



Flow cytometric analysis of Blank contro...

Preservatives

0.01M TBS(pH7.4) with 1% rAlbumin, 0.03% Proclin300 and 50% Glycerol.

Form/Appearance

Liquid

Concentration

1mg/ml

Storage

Shipped at 4°C. Store at -20 °C for one year. Avoid repeated freeze/thaw cycles.

Note

For research use only

Isotype

IgG

Clonality

Polyclonal

MW

240 kDa

Uniprot ID
[P24928](https://www.uniprot.org/entry/P24928)
Dilution Range

Flow-Cyt=1ug/Test, WB=1:500-2000, IHC-P=1:100-500, IHC-F=1:100-500, IF=1:100-500, ELISA=1:5000-10000

Expiration Date

12 months from date of receipt.