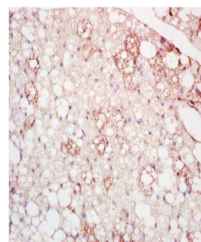


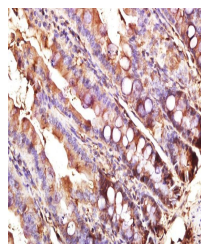
Product Datasheet

ASAM antibody (orb100510)

Description	ASAM antibody
Species/Host	Rabbit
Reactivity	Human
Conjugation	Unconjugated
Tested Applications	WB
Immunogen	KLH conjugated synthetic peptide derived from human ASAM/ACAM (15-110/373 aa)
Target	ASAM
Preservatives	0.01M TBS(pH7.4) with 1% rAlbumin, 0.03% Proclin300 and 50% Glycerol.
Form/Appearance	Liquid
Concentration	1mg/ml
Storage	Shipped at 4°C. Store at -20 °C for one year. Avoid repeated freeze/thaw cycles.
Note	For research use only
Isotype	IgG
Clonality	Polyclonal
MW	39 kDa
Uniprot ID	Q9H6B4
Dilution Range	WB=1:500-2000
Expiration Date	12 months from date of receipt.



Paraffin-embedded adipose cell besides o...



Immunohistochemical analysis of rat smal...