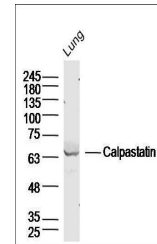


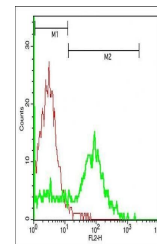
Product Datasheet

Calpastatin antibody (orb100367)

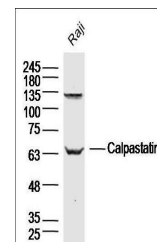
Description	Calpastatin antibody
Species/Host	Rabbit
Reactivity	Human
Conjugation	Unconjugated
Tested Applications	IHC-P, WB
Immunogen	KLH conjugated synthetic peptide derived from human Calpastatin (431-530/708 aa)
Target	Calpastatin
Preservatives	0.01M TBS(pH7.4) with 1% rAlbumin, 0.03% Proclin300 and 50% Glycerol.
Form/Appearance	Liquid
Concentration	1mg/ml
Storage	Shipped at 4°C. Store at -20 °C for one year. Avoid repeated freeze/thaw cycles.
Note	For research use only
Isotype	IgG
Clonality	Polyclonal
MW	70 kDa
Uniprot ID	P20810
Dilution Range	WB=1:500-2000, IHC-P=1:100-500
Expiration Date	12 months from date of receipt.



Western blot analysis of mouse Lung lysa...



Flow cytometric analysis of mouse spleen...



Western blot analysis of Human Raji cell...