

Product Datasheet

beta Actin antibody (orb10033)

Description

beta Actin antibody

Species/Host

Rabbit

Conjugation

Unconjugated

Tested Applications

ELISA, IHC-P, WB

Immunogen

KLH conjugated synthetic peptide derived from human beta Actin. Please contact us for the exact immunogen sequence. The peptide is available as orb374699.

Target

beta Actin

Form/Appearance

C: 10 mM PBS, 0.02% Sodium Azide, 10 mg/ml rAlbumin, 50% Glycerol

Concentration

- 100 µg (in 200 µl): 0.5 mg/ml- 200 µg (in 400 µl): 0.5 mg/ml

Storage

Store at 4°C for up to two weeks. For long term storage, aliquot and store at -20°C, avoid freeze/thaw cycles.

Note

For research use only

Application notes

This Beta Actin antibody is against Human, Mouse, Rat, cat, Chicken, Cow, Dog, Fish, Guinea Pig, hm, mMouset, op, Pig, Rabbit, Sheep.

Isotype

IgG

Clonality

Polyclonal

Purity

Polyclonal antibodies are purified by peptide affinity chromatography

MW

42 kDa


Uniprot ID
[P60710](#), [P60711](#), [P60709](#)
NCBI
[31](#), [001101](#), [001092](#), [11](#)
Entrez
[60](#)
Dilution Range

P-ELISA:1:500-1000, WB:1:100-500, IHC-P:1:100-500 (based on 0.5 mg/ml)

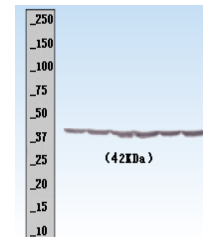
Expiration Date

12 months from date of receipt.

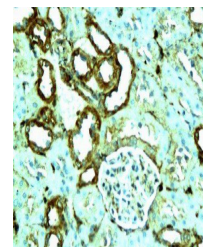
 12%Gel
Rat lung



Western blot analysis of rat lung lysate...



Western blot analysis of mouse brain lys...



Immunohistochemical staining of paraffin...