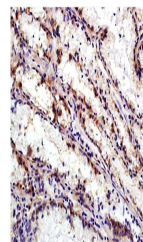


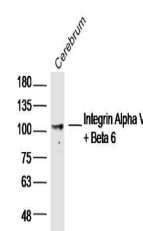
Product Datasheet

Integrin Alpha V/Beta 6 antibody (orb100289)

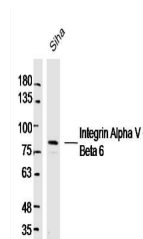
| | |
|----------------------------|--|
| Description | Integrin Alpha V/Beta 6 antibody |
| Species/Host | Rabbit |
| Reactivity | Human, Mouse, Rat |
| Conjugation | Unconjugated |
| Tested Applications | FC, WB |
| Immunogen | KLH conjugated synthetic peptide derived from human Integrin Alpha V + Beta 6 |
| Target | Integrin Alpha V + Beta 6 |
| Preservatives | 0.01M TBS(pH7.4) with 1% rAlbumin, 0.03% Proclin300 and 50% Glycerol. |
| Form/Appearance | Liquid |
| Concentration | 1mg/ml |
| Storage | Shipped at 4°C. Store at -20 °C for one year. Avoid repeated freeze/thaw cycles. |
| Note | For research use only |
| Isotype | IgG |
| Clonality | Polyclonal |
| MW | 18/95/113 kDa |
| Uniprot ID | P06756 |
| Dilution Range | WB=1:500-2000, Flow-Cyt=1µg/Test, IHC-P=1:100-500, IHC-F=1:100-500, IF=1:100-500, ELISA=1:5000-10000 |
| Expiration Date | 12 months from date of receipt. |



Paraffin-embedded human gastric carcinom...



Western blot analysis of Rat Cerebrum Ly...



Western blot analysis of Human Siha Cell...