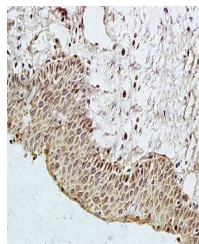


Product Datasheet

PAR3 antibody (orb100287)

Description	PAR3 antibody
Species/Host	Rabbit
Reactivity	Human
Conjugation	Unconjugated
Tested Applications	ELISA, IF, IHC-Fr, WB
Immunogen	KLH conjugated synthetic peptide derived from human PAR3. (1201-1356/1356 aa)
Target	PAR3
Preservatives	0.01M TBS(pH7.4) with 1% rAlbumin, 0.03% Proclin300 and 50% Glycerol.
Form/Appearance	Liquid
Concentration	1mg/ml
Storage	Shipped at 4°C. Store at -20 °C for one year. Avoid repeated freeze/thaw cycles.
Note	For research use only
Isotype	IgG
Clonality	Polyclonal
MW	149 kDa
Uniprot ID	Q8TEW0
Expiration Date	12 months from date of receipt.



Immunohistochemical analysis of formalin...