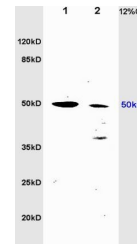


Product Datasheet

Beta tubulin (Loading Control) Antibody (orb100281)

Description	Beta tubulin (Loading Control) Antibody
Species/Host	Rabbit
Reactivity	Human, Mouse, Rat
Conjugation	Unconjugated
Tested Applications	FC, IHC-P, WB
Immunogen	KLH conjugated synthetic peptide derived from human tubulin Beta (61-160/444 aa)
Target	Beta tubulin (Loading Control)
Preservatives	0.01M TBS(pH7.4) with 1% rAlbumin, 0.03% Proclin300 and 50% Glycerol.
Form/Appearance	Liquid
Concentration	1mg/ml
Storage	Shipped at 4°C. Store at -20 °C for one year. Avoid repeated freeze/thaw cycles.
Note	For research use only
Isotype	IgG
Clonality	Polyclonal
MW	55 kDa
Uniprot ID	P07437
Dilution Range	WB=1:5000-20000, IHC-P=1:100-500, Flow-Cyt=1ug/Test, IHC-F=1:100-500, IF=1:100-500, ELISA=1:5000-10000
Expiration Date	12 months from date of receipt.



Western blot analysis of rat brain lysat...