
Product Datasheet

Tissue Factor antibody (orb100189)

Description

Tissue Factor antibody

Species/Host

Rabbit

Conjugation

Unconjugated

Tested Applications

ELISA, IHC-P, WB

Immunogen

KLH conjugated synthetic peptide derived from human Tissue Factor. Please contact us for the exact immunogen sequence. The peptide is available as orb374810.

Target

Tissue Factor

Form/Appearance

10 mM PBS, 0.02% sodium azide

Concentration

- 100 µg (in 200 µl): 0.5 mg/ml- 200 µg (in 400 µl): 0.5 mg/ml

Storage

Store at 4°C for up to two weeks. For long term storage, aliquot and store at -20°C, avoid freeze/thaw cycles.

Note

For research use only

Isotype

IgG

Clonality

Polyclonal

Purity

Polyclonal antibodies are purified by peptide affinity chromatography

MW

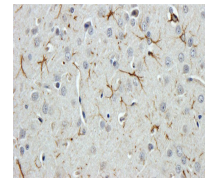
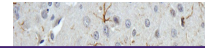
35 kDa

Uniprot ID
[P13726](#)
NCBI
[41](#), [001984](#), [001993](#), [11](#)
Entrez
[2152](#)
Dilution Range

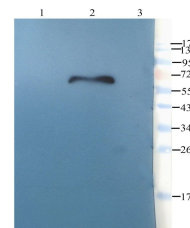
WB: 1:100-1000, IHC-P: 1:100-800 (based on 0.5 mg/ml)

Expiration Date

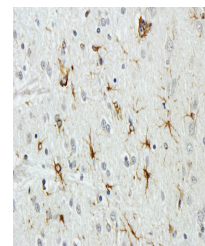
12 months from date of receipt.



IHC-P image of rat brain tissue using an...



WB analysis of mouse brain (lane 1), rat...



Immunohistochemical staining of paraffin...