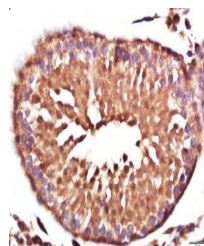


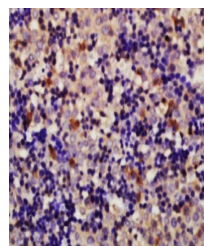
Product Datasheet

Vinculin antibody (orb100164)

Description	Vinculin antibody
Species/Host	Rabbit
Reactivity	Human, Mouse, Rat
Conjugation	Unconjugated
Tested Applications	FC, IHC-P
Immunogen	KLH conjugated synthetic peptide derived from human Vinculin (1001-1134/1134 aa)
Target	Vinculin
Preservatives	0.01M TBS(pH7.4) with 1% rAlbumin, 0.03% Proclin300 and 50% Glycerol.
Form/Appearance	Liquid
Concentration	1mg/ml
Storage	Shipped at 4°C. Store at -20 °C for one year. Avoid repeated freeze/thaw cycles.
Note	For research use only
Isotype	IgG
Clonality	Polyclonal
MW	125 kDa
Uniprot ID	P18206
Dilution Range	IHC-P=1:100-500, Flow-Cyt=3ug/Test, IHC-F=1:100-500, IF=1:100-500, ELISA=1:5000-10000
Expiration Date	12 months from date of receipt.



Immunohistochemical staining of rat test...



Immunohistochemical staining of mouse em...