

FIX&PERM® Cell Fixation and Permeabilization Kit

Catalogue number: orb1972402

Size: 8 x 5ml

Application: Flow Cytometry

Background

Flow cytometric analyses with monoclonal antibodies were so far mainly restricted to cell surface molecules. Intracellular structures such as cytoplasmic or nuclear enzymes, oncoproteins, cytokines, immunoglobulins etc. were largely excluded from such studies. Also excluded from flow cytometric studies were cytoplasmic localizations of well-established membrane molecules like CD3 and CD22, which, in their cytoplasmic form, are the most reliable lineage markers in undifferentiated leukaemia. With the FIX&PERM® Kit flow cytometric analysis of intracellular antigens has become as easy as surface antigen studies. The only prerequisite is the availability of suitable antibody conjugates. Most of the available monoclonal antibody conjugates can be used with the FIX&PERM® Kit, some determinants are sensitive, however, to the fixation step involved. This and the optimal fixation time have to be tested for each reagent. Results must be interpreted by a certified professional before final interpretation. Analyses performed with this antibody should be paralleled by positive and negative controls. If unexpected results are obtained which cannot be attributed to differences in laboratory procedures, please contact us.

Product

This FIX&PERM® Cell Fixation and Permeabilization Kit contains 2 reagents: Fixation Medium (Reagent A) and Permeabilization Medium (Reagent B). It is intended for first fixing cells in suspension with Reagent A and then permeabilizing the cell membranes with Reagent B. This procedure gives antibodies access to intracellular structures and leaves the morphological scatter characteristics of cells intact. Specific formulations reduce background staining and allow simultaneous addition of permeabilization medium and fluorochrome labelled antibodies. FIX&PERM® is suitable for the analysis of normal and malignant leukocyte populations derived from various human biological samples (blood, bone marrow and others) using flow cytometry. Results must be put within the context of other diagnostic tests as well as the clinical history of the patient by a certified professional before final interpretation. Format: 4 x 5ml vial of Fixation Medium (Reagent A) and 4 x 5ml vial Permeabilization Medium (Reagent B). FIX&PERM® Reagents are designed for use with all commercially available flow cytometers. Alignment and compensation should be performed according to manufacturer's instructions. The quality of each FIX&PERM® Lot is determined by fixation and permeabilization of well defined blood samples from representative donors and subsequent comparison of forward and side scatter characteristics of obtained leukocytes, as well as immunostaining efficiency for several membranous and cytoplasmic antigens

Applications

Biological fluids (blood, bone marrow, and others) must be collected under sterile conditions. Anticoagulation with EDTA or heparin is recommended. The samples should be stored at room

temperature until used. For optimal results, samples should be processed and analysed within 24 hours. Samples with high numbers of non-viable cells might cause false results, such cases require determination of cell viability with e.g. propidium iodide. All biological samples have to be handled with caution. Always consider them as potentially infective. Use appropriate precautions such as gloves, lab-coat, etc. Fixation, permeabilization and staining procedure: • For each sample to be analysed add 50 µl of whole blood, bone marrow or mononuclear cell suspension in a 5ml tube • Add 100 µl of Reagent A (Fixation Medium, stored and used at room temperature) • Incubate for 15 minutes at room temperature • Add 5ml phosphate buffered saline and centrifuge cells for 5 minutes at 300 g • Remove supernatant and add to cell pellet 100 µl Reagent B (Permeabilization Medium) and 20 µl of the appropriate Biorbyt monoclonal antibody conjugate • Vortex at low speed for 1-2 seconds • Incubate for 15 minutes at room temperature • Wash cells with phosphate buffered saline as described above • Remove supernatant and resuspend cells in sheath fluid for immediate analysis or resuspend cells in 0.5 ml 1.0 % formaldehyde and store them at 2-8°C in the dark. Analyse fixed cells within 24 hours. Comments: Special cases (diluted bone marrow samples, other samples containing low soluble protein) might benefit from replenishment with plasma components before the FIX&PERM® treatment in order to create a milieu, which more closely resembles the situation in anti-coagulated blood. For that purpose addition of IgG preparations (e.g. Beriglobulin P, ZLB Behring, final concentration 10mg/ml) and human serum albumin (e.g. human albumin "Behring" 20% - infusion solution, final concentration 40mg/ml) is recommended.

Limitations of the technique

Flow cytometry should be performed by professional users only. Improper alignment of the flow cytometer, inaccurate compensation of fluorescence leaking into other channels as well as incorrect positioning of regions may lead to false results. Lysis of red cells might be impossible for various reasons. In such instances it is recommended to isolate mononuclear cells (MNC) via density gradient centrifugation prior to staining. Results will be correct and reproducible as long as the procedures used respect the technical recommendations and obey good laboratory practice. The FIX&PERM® solutions are provided in a concentration that will allow to fix and permeabilize human hematopoietic cells. It is therefore strongly recommended to stick to the working protocol in terms of concentration and volume regarding cells and antibody. The properties of FIX&PERM® have been determined using EDTA anti-coagulated peripheral blood.

Storage

FIX&PERM® Cell Fixation and Permeabilization Kit reagents should be stored and used at room temperature. Do not freeze. Stability of the reagent: Please refer to the expiry date printed onto the vial. The use of the reagent after the expiration date is not recommended. If reagents are stored under any conditions other than those specified, the conditions must be verified by the user. Do not use reagents if a precipitate should form or discoloration occurs. If unexpected results are obtained which cannot be attributed to differences in laboratory procedures, please contact us.

Shipping Conditions: Ship at ambient temperature

Caution

This product is intended FOR RESEARCH USE ONLY (RUO), and FOR TESTS IN VITRO, not for use in diagnostic or therapeutic procedures involving humans or animals. For professional users only. Reagent A of FIX&PERM® Cell Fixation and Permeabilization Kit contains formaldehyde and is

labelled: Harmful. Formaldehyde is toxic, allergenic and a suspected carcinogen. Never pipette by mouth and avoid contact with eyes, skin and clothing. Proper handling procedures are recommended. As a main rule, persons under 18 years of age are not allowed to work with this product. Users must be carefully instructed in the proper working procedure, the dangerous properties of the product and the necessary safety instructions. Please refer to the Safety Data Sheet (SDS) for additional information. Dispose product remainders according to local regulations.

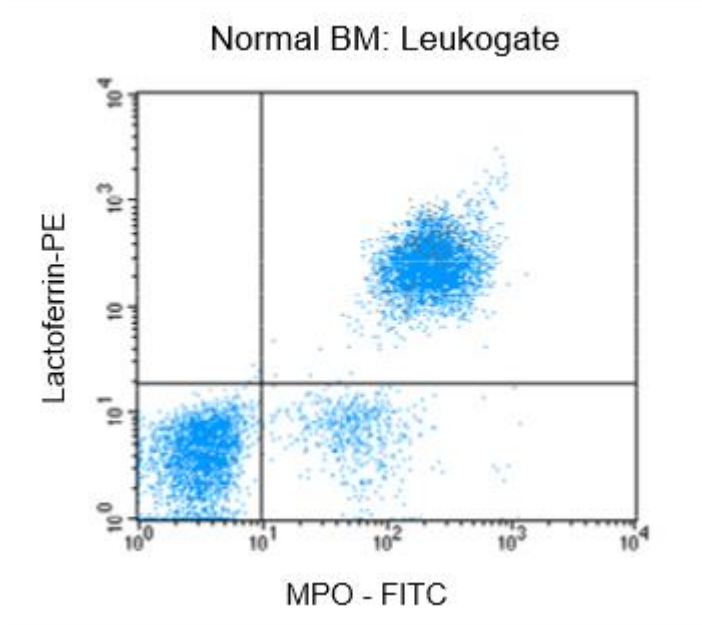


Figure 1: Flow cytometric analysis of normal bone marrow (BM) after fixation and permeabilization using orb1972402, followed by immunostaining for lactoferrin and MPO-C2.

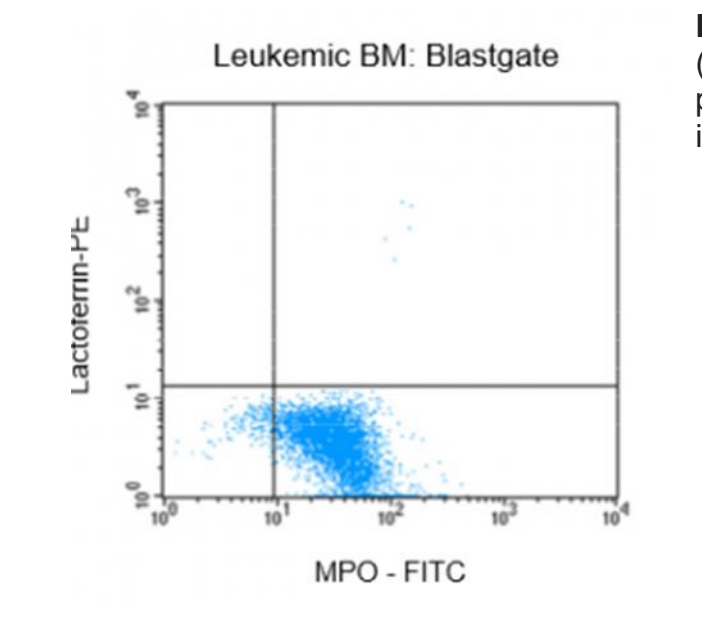


Figure 2: Flow cytometric analysis of bone marrow (BM) from a leukaemia patient after fixation and permeabilization using orb1972402, followed by immunostaining for lactoferrin and MPO-C2.

Figure 3: Immunostaining with Biorbyt CD22-PE conjugate of undifferentiated leukemia cells of B-ALL type.

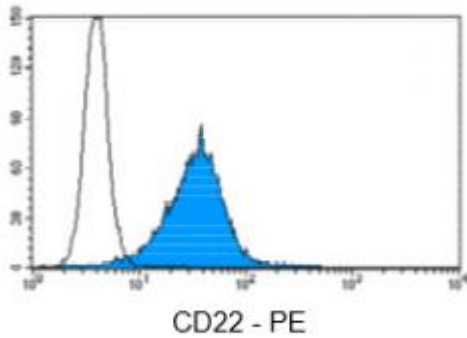


Figure 4: Immunostaining with Biorbyt CD3-PE conjugate of surface CD3-negative undifferentiated leukemia cells of T-ALL type.

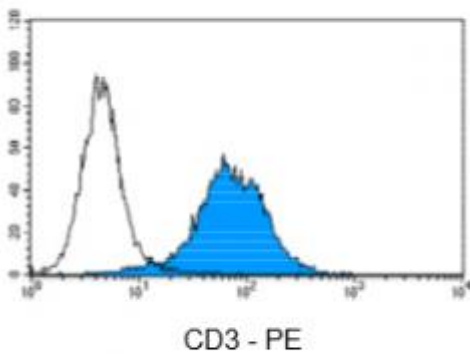
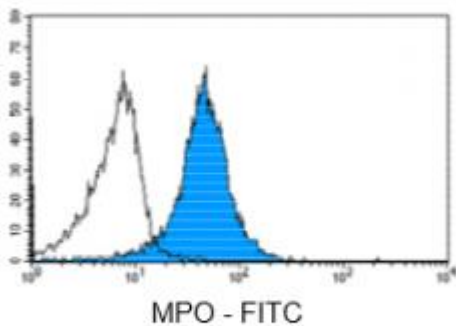


Figure 5: Immunostaining with Biorbyt anti MPO-FITC conjugate of undifferentiated leukaemia cells of AML type.



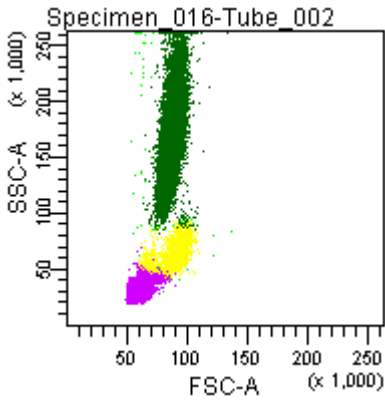


Figure 6: Forward and side scatter pattern of a normal blood sample treated with orb1972402.

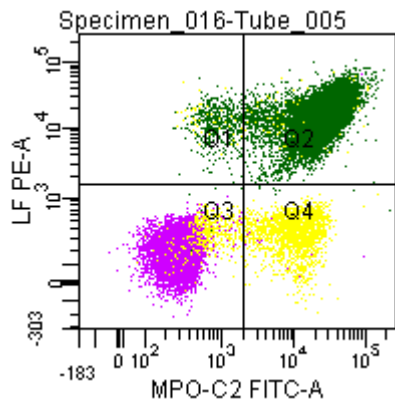


Figure 7: Double labelling of a normal blood sample treated with orb1972402, and immunostained for Lactoferrin (PE) and MPO-C2 (FITC).

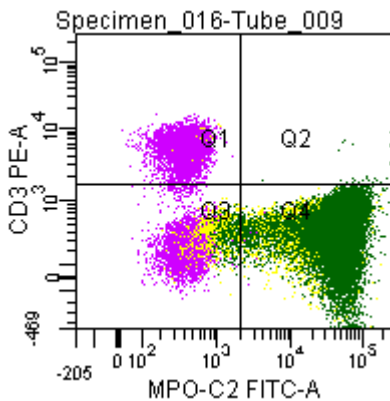


Figure 8; Double labelling of a normal blood sample treated with orb1972402, and immunostained for CD3 (PE) and MPO-C2 (FITC).

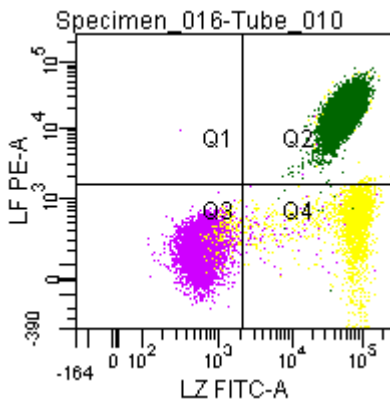


Figure 9: Double labelling of a normal blood sample treated with orb1972402, and immunostained for Lactoferrin (PE) and Lysozyme (FITC).