

**COPT1 rabbit pAb****Cat#: orb774858 (Manual)**

For research use only. Not intended for diagnostic use.

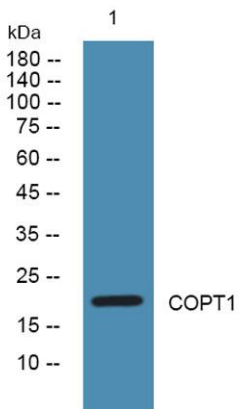
<b>Product Name</b>	COPT1 rabbit pAb
<b>Host species</b>	Rabbit
<b>Applications</b>	WB;ELISA
<b>Species Cross-Reactivity</b>	Human;Mouse
<b>Recommended dilutions</b>	WB 1:500-2000 ELISA 1:5000-20000
<b>Immunogen</b>	Synthesized peptide derived from part region of human protein
<b>Specificity</b>	COPT1 Polyclonal Antibody detects endogenous levels of protein.
<b>Formulation</b>	Liquid in PBS containing 50% glycerol, and 0.02% sodium azide..
<b>Storage</b>	Store at -20°C. Avoid repeated freeze-thaw cycles.
<b>Protein Name</b>	High affinity copper uptake protein 1 (Copper transporter 1) (hCTR1) (Solute carrier family 31 member 1)
<b>Gene Name</b>	SLC31A1 COPT1 CTR1
<b>Cellular localization</b>	Cell membrane; Multi-pass membrane protein. Localizes to the apical membrane in intestinal epithelial cells. .
<b>Purification</b>	The antibody was affinity-purified from rabbit antiserum by affinity-chromatography using epitope-specific immunogen.
<b>Clonality</b>	Polyclonal

<b>Concentration</b>	1 mg/ml
<b>Observed band</b>	20kD
<b>Human Gene ID</b>	1317
<b>Human Swiss-Prot Number</b>	O15431

#### Alternative Names

#### Background

The protein encoded by this gene is a high-affinity copper transporter found in the cell membrane. The encoded protein functions as a homotrimer to effect the uptake of dietary copper. [provided by RefSeq, Aug 2011],



Western blot analysis of lysates from PC12 cells, primary antibody was diluted at 1:1000, 4° over night