

FAT2 rabbit pAb**Cat#: orb774713 (Manual)**

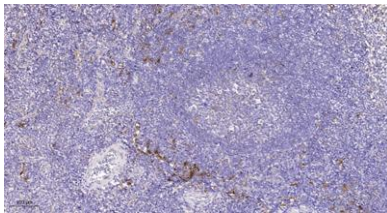
For research use only. Not intended for diagnostic use.

Product Name	FAT2 rabbit pAb
Host species	Rabbit
Applications	IHC;IF
Species Cross-Reactivity	Human;Mouse;Rat
Recommended dilutions	IHC-p 1:50-300
Immunogen	Synthesized peptide derived from part region of human protein
Specificity	FAT2 Polyclonal Antibody detects endogenous levels of protein.
Formulation	Liquid in PBS containing 50% glycerol, and 0.02% sodium azide..
Storage	Store at -20°C. Avoid repeated freeze-thaw cycles.
Protein Name	Protocadherin Fat 2 (hFat2) (Cadherin family member 8) (Multiple epidermal growth factor-like domains protein 1) (Multiple EGF-like domains protein 1)
Gene Name	FAT2 CDHF8 KIAA0811 MEGF1
Cellular localization	Cell membrane ; Single-pass type I membrane protein . Cell junction . Golgi apparatus, trans-Golgi network . Localized at adhesion zippers (early state of adherens junctions) of keratinocytes. .
Purification	The antibody was affinity-purified from rabbit antiserum by affinity-chromatography using epitope-specific immunogen.

Clonality	Polyclonal
Concentration	1 mg/ml
Observed band	478kD
Human Gene ID	2196
Human Swiss-Prot Number	Q9NYQ8
Alternative Names	

Background

This gene is the second identified human homolog of the *Drosophila* fat gene, which encodes a tumor suppressor essential for controlling cell proliferation during *Drosophila* development. The gene product is a member of the cadherin superfamily, a group of integral membrane proteins characterized by the presence of cadherin-type repeats. In addition to containing 34 tandem cadherin-type repeats, the gene product has two epidermal growth factor (EGF)-like repeats and one laminin G domain. This protein most likely functions as a cell adhesion molecule, controlling cell proliferation and playing an important role in cerebellum development. [provided by RefSeq, Jul 2008].



Immunohistochemical analysis of paraffin-embedded human tonsil. 1, Tris-EDTA, pH 9.0 was used for antigen retrieval. 2 Antibody was diluted at 1:200 (4° overnight). 3, Secondary antibody was diluted at 1:200 (room temperature, 45min).