

NPY6R rabbit pAb**Cat#: orb774610 (Manual)**

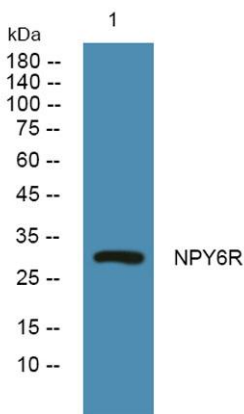
For research use only. Not intended for diagnostic use.

| | |
|---------------------------------|--|
| Product Name | NPY6R rabbit pAb |
| Host species | Rabbit |
| Applications | WB;ELISA |
| Species Cross-Reactivity | Human;Mouse |
| Recommended dilutions | WB 1:500-2000 ELISA 1:5000-20000 |
| Immunogen | Synthesized peptide derived from human protein . at AA range: 190-270 |
| Specificity | NPY6R Polyclonal Antibody detects endogenous levels of protein. |
| Formulation | Liquid in PBS containing 50% glycerol, and 0.02% sodium azide.. |
| Storage | Store at -20°C. Avoid repeated freeze-thaw cycles. |
| Protein Name | Putative neuropeptide Y receptor type 6 (NPY6-R) (NPY Y1-like receptor) (Putative pancreatic polypeptide receptor 2) (PP2) |
| Gene Name | NPY6R NPY1RL Y2B |
| Cellular localization | Membrane ; Multi-pass membrane protein . |
| Purification | The antibody was affinity-purified from rabbit antiserum by affinity-chromatography using epitope-specific immunogen. |
| Clonality | Polyclonal |

| | |
|--------------------------------|---------|
| Concentration | 1 mg/ml |
| Observed band | 31kD |
| Human Gene ID | |
| Human Swiss-Prot Number | Q99463 |
| Alternative Names | |

Background

caution: Could be the product of a pseudogene. According to PubMed:97066888, PubMed:97066971 and PubMed:9013614, the human NPY6R gene is an expressed pseudogene containing a premature stop codon and encoding a non-functional truncated protein missing the last transmembrane domain. A single base pair deletion relative to the mouse ortholog, results in a truncated protein lacking the seventh transmembrane domain. .function: When expressed, is unable to bind pancreatic polypeptide (PP), neuropeptide Y (NPY), or peptide YY (PYY), suggesting that either it is functionally inactive or that it may have acquired a pancreatic polypeptide-independent function. .similarity: Belongs to the G-protein coupled receptor 1 family. .tissue specificity: Expressed in heart, skeletal muscle, gastrointestinal tissues, spleen, brain and adrenal glands. .



Western blot analysis of lysates from K562 cells, primary antibody was diluted at 1:1000, 4° over night