

NPSR1 rabbit pAb**Cat#: orb774384 (Manual)**

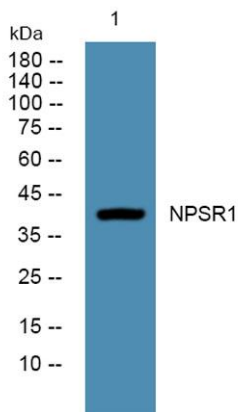
For research use only. Not intended for diagnostic use.

Product Name	NPSR1 rabbit pAb
Host species	Rabbit
Applications	WB;ELISA
Species Cross-Reactivity	Human;Mouse;Rat
Recommended dilutions	WB 1:500-2000 ELISA 1:5000-20000
Immunogen	Synthesized peptide derived from part region of human protein
Specificity	NPSR1 Polyclonal Antibody detects endogenous levels of protein.
Formulation	Liquid in PBS containing 50% glycerol, and 0.02% sodium azide..
Storage	Store at -20°C. Avoid repeated freeze-thaw cycles.
Protein Name	Neuropeptide S receptor (G-protein coupled receptor 154) (G-protein coupled receptor PGR14) (G-protein coupled receptor for asthma susceptibility)
Gene Name	NPSR1 GPR154 GPRA PGR14
Cellular localization	[Isoform 1]: Cell membrane ; Multi-pass membrane protein .; [Isoform 3]: Cell membrane ; Multi-pass membrane protein .; [Isoform 4]: Cell membrane ; Multi-pass membrane protein .; [Isoform 2]: Cytoplasm .; [Isoform 5]: Cytoplasm .; [Isoform 6]: Cytoplasm .; [Isoform 7]: Cytoplasm .; [Isoform 9]: Cytoplasm .

Purification	The antibody was affinity-purified from rabbit antiserum by affinity-chromatography using epitope-specific immunogen.
Clonality	Polyclonal
Concentration	1 mg/ml
Observed band	40kD
Human Gene ID	387129
Human Swiss-Prot Number	Q6W5P4
Alternative Names	

Background

This gene encodes a member of the vasopressin/oxytocin subfamily of G protein-coupled receptors. The encoded membrane protein acts as a receptor for neuropeptide S and affects a variety of cellular processes through its signaling. Increased expression of this gene in ciliated cells of the respiratory epithelium and in bronchial smooth muscle cells is associated with asthma. Polymorphisms in this gene have also been associated with asthma susceptibility, panic disorders, inflammatory bowel disease, and rheumatoid arthritis. Alternative splicing results in multiple transcript variants. [provided by RefSeq, Jul 2014],



Western blot analysis of lysates from DU145 cells, primary antibody was diluted at 1:1000, 4°over night