

PDYN rabbit pAb**Cat#: orb774306 (Manual)**

For research use only. Not intended for diagnostic use.

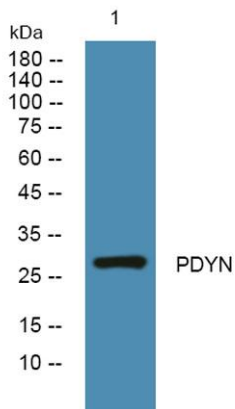
Product Name	PDYN rabbit pAb
Host species	Rabbit
Applications	WB;ELISA
Species Cross-Reactivity	Human;Mouse;Rat
Recommended dilutions	WB 1:500-2000 ELISA 1:5000-20000
Immunogen	Synthesized peptide derived from human protein . at AA range: 201-250
Specificity	PDYN Polyclonal Antibody detects endogenous levels of protein.
Formulation	Liquid in PBS containing 50% glycerol, and 0.02% sodium azide..
Storage	Store at -20°C. Avoid repeated freeze-thaw cycles.
Protein Name	Proenkephalin-B (Beta-neoendorphin-dynorphin) (Preprodynorphin) [Cleaved into: Alpha-neoendorphin; Beta-neoendorphin; Big dynorphin (Big Dyn); Dynorphin A(1-17) (Dyn-A17) (Dynorphin A); Dynorphin A(1-
Gene Name	PDYN
Cellular localization	Secreted.
Purification	The antibody was affinity-purified from rabbit antiserum by affinity-chromatography using epitope-specific immunogen.
Clonality	Polyclonal

Concentration	1 mg/ml
Observed band	27kD
Human Gene ID	5173
Human Swiss-Prot Number	P01213

Alternative Names

Background

The protein encoded by this gene is a preproprotein that is proteolytically processed to form the secreted opioid peptides beta-neoendorphin, dynorphin, leu-enkephalin, rimorphin, and leumorphin. These peptides are ligands for the kappa-type of opioid receptor. Dynorphin is involved in modulating responses to several psychoactive substances, including cocaine. Multiple alternatively spliced transcript variants encoding the same protein have been found for this gene. [provided by RefSeq, Jul 2010],



Western blot analysis of lysates from SW480 cells, primary antibody was diluted at 1:1000, 4°C over night