

**R4RL2 rabbit pAb****Cat#: orb774089 (Manual)**

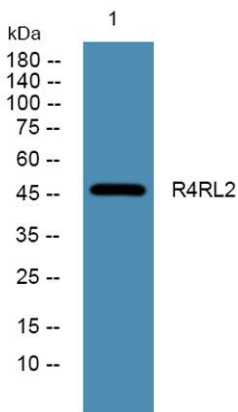
For research use only. Not intended for diagnostic use.

<b>Product Name</b>	R4RL2 rabbit pAb
<b>Host species</b>	Rabbit
<b>Applications</b>	WB;ELISA
<b>Species Cross-Reactivity</b>	Human;Rat;Mouse
<b>Recommended dilutions</b>	WB 1:500-2000 ELISA 1:5000-20000
<b>Immunogen</b>	Synthesized peptide derived from human protein . at AA range: 290-370
<b>Specificity</b>	R4RL2 Polyclonal Antibody detects endogenous levels of protein.
<b>Formulation</b>	Liquid in PBS containing 50% glycerol, and 0.02% sodium azide..
<b>Storage</b>	Store at -20°C. Avoid repeated freeze-thaw cycles.
<b>Protein Name</b>	Reticulon-4 receptor-like 2 (Nogo receptor-like 3) (Nogo-66 receptor homolog 1) (Nogo-66 receptor-related protein 2) (NgR2)
<b>Gene Name</b>	RTN4RL2 NGRH1 NGRL3
<b>Cellular localization</b>	Cell membrane ; Lipid-anchor, GPI-anchor . Membrane raft . Cell projection, dendrite . Perikaryon . Cell projection, axon . Localized to the surface of neurons, including axons. Detected close to synapses, but is excluded from synapses. .
<b>Purification</b>	The antibody was affinity-purified from rabbit antiserum by affinity-chromatography using epitope-specific immunogen.

<b>Clonality</b>	Polyclonal
<b>Concentration</b>	1 mg/ml
<b>Observed band</b>	46kD
<b>Human Gene ID</b>	349667
<b>Human Swiss-Prot Number</b>	Q86UN3
<b>Alternative Names</b>	

## Background

function: May play a role in regulating axonal regeneration and plasticity in the adult central nervous system.,PTM: Undergoes zinc metalloproteinase-mediated ectodomain shedding in neuroblastoma cells; where BRE is released as a full-length ectodomain and an N-terminal fragment containing the leucine-rich repeat (LRR) region of the protein.,similarity: Belongs to the Nogo receptor family.,similarity: Contains 8 LRR (leucine-rich) repeats.,subcellular location: Localized to the surface of neurons, including axons.,tissue specificity: Highly expressed in brain and liver. Expressed at lower levels in kidney, mammary gland, placenta, skeletal muscle, spleen and thyroid.,



Western blot analysis of lysates from K562 cells, primary antibody was diluted at 1:1000, 4° over night