

LY86 rabbit pAb**Cat#: orb774084 (Manual)**

For research use only. Not intended for diagnostic use.

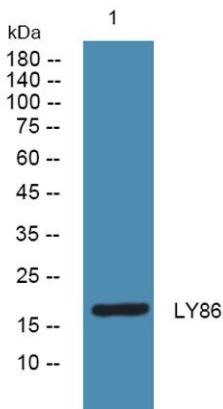
Product Name	LY86 rabbit pAb
Host species	Rabbit
Applications	WB;ELISA
Species Cross-Reactivity	Human;Mouse
Recommended dilutions	WB 1:500-2000 ELISA 1:5000-20000
Immunogen	Synthesized peptide derived from human protein . at AA range: 80-160
Specificity	LY86 Polyclonal Antibody detects endogenous levels of protein.
Formulation	Liquid in PBS containing 50% glycerol, and 0.02% sodium azide..
Storage	Store at -20°C. Avoid repeated freeze-thaw cycles.
Protein Name	Lymphocyte antigen 86 (Ly-86) (Protein MD-1)
Gene Name	LY86 MD1
Cellular localization	Secreted, extracellular space. Associated with CD180 at the cell surface.
Purification	The antibody was affinity-purified from rabbit antiserum by affinity-chromatography using epitope-specific immunogen.
Clonality	Polyclonal

Concentration	1 mg/ml
Observed band	17kD
Human Gene ID	9450
Human Swiss-Prot Number	O95711

Alternative Names

Background

function:May cooperate with CD180 and TLR4 to mediate the innate immune response to bacterial lipopolysaccharide (LPS) and cytokine production. Important for efficient CD180 cell surface expression.,induction:In monocytes, down-regulated by the cell-wall fraction of Mycobacterium bovis (BCG-CWS).,subcellular location:Associated with CD180 at the cell surface.,subunit:Binds CD180.,tissue specificity:Highly expressed in B-cells, monocytes and tonsil.,



Western blot analysis of lysates from U2OS cells, primary antibody was diluted at 1:1000, 4° over night