

**FETUB rabbit pAb****Cat#: orb774051 (Manual)**

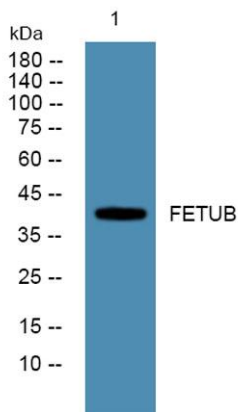
For research use only. Not intended for diagnostic use.

<b>Product Name</b>	FETUB rabbit pAb
<b>Host species</b>	Rabbit
<b>Applications</b>	WB;ELISA
<b>Species Cross-Reactivity</b>	Human;Rat;Mouse
<b>Recommended dilutions</b>	WB 1:500-2000 ELISA 1:5000-20000
<b>Immunogen</b>	Synthesized peptide derived from human protein . at AA range: 220-300
<b>Specificity</b>	FETUB Polyclonal Antibody detects endogenous levels of protein.
<b>Formulation</b>	Liquid in PBS containing 50% glycerol, and 0.02% sodium azide..
<b>Storage</b>	Store at -20°C. Avoid repeated freeze-thaw cycles.
<b>Protein Name</b>	Fetuin-B (16G2) (Fetuin-like protein IRL685) (Gugu)
<b>Gene Name</b>	FETUB
<b>Cellular localization</b>	Secreted .
<b>Purification</b>	The antibody was affinity-purified from rabbit antiserum by affinity-chromatography using epitope-specific immunogen.
<b>Clonality</b>	Polyclonal

<b>Concentration</b>	1 mg/ml
<b>Observed band</b>	42kD
<b>Human Gene ID</b>	26998
<b>Human Swiss-Prot Number</b>	Q9UGM5
<b>Alternative Names</b>	

## Background

fetuin B(FETUB) Homo sapiens The protein encoded by this gene is a member of the fetuin family, part of the cystatin superfamily of cysteine protease inhibitors. Fetuins have been implicated in several diverse functions, including osteogenesis and bone resorption, regulation of the insulin and hepatocyte growth factor receptors, and response to systemic inflammation. This protein may be secreted by cells. [provided by RefSeq, Jul 2008],



Western blot analysis of lysates from K562 cells, primary antibody was diluted at 1:1000, 4° over night