

BEX3 rabbit pAb**Cat#: orb774047 (Manual)**

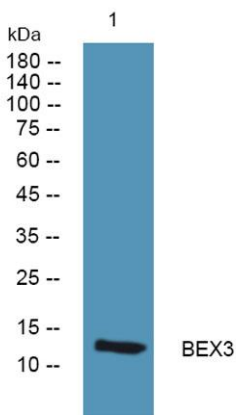
For research use only. Not intended for diagnostic use.

Product Name	BEX3 rabbit pAb
Host species	Rabbit
Applications	WB;ELISA
Species Cross-Reactivity	Human;Rat;Mouse
Recommended dilutions	WB 1:500-2000 ELISA 1:5000-20000
Immunogen	Synthesized peptide derived from human protein . at AA range: 1-80
Specificity	BEX3 Polyclonal Antibody detects endogenous levels of protein.
Formulation	Liquid in PBS containing 50% glycerol, and 0.02% sodium azide..
Storage	Store at -20°C. Avoid repeated freeze-thaw cycles.
Protein Name	Protein BEX3 (Brain-expressed X-linked protein 3) (Nerve growth factor receptor-associated protein 1) (Ovarian granulosa cell 13.0 kDa protein HGR74) (p75NTR-associated cell death executor)
Gene Name	NGFRAP1 BEX3 DXS6984E NADE
Cellular localization	Nucleus. Cytoplasm. Shuttles between the cytoplasm and the nucleus. Associates with replicating mitochondria (By similarity). .
Purification	The antibody was affinity-purified from rabbit antiserum by affinity-chromatography using epitope-specific immunogen.

Clonality	Polyclonal
Concentration	1 mg/ml
Observed band	12kD
Human Gene ID	27018
Human Swiss-Prot Number	Q00994
Alternative Names	

Background

domain:The nuclear export signal is required for export from the nucleus and the interactions with itself and p75NTR/NGFR.,function:May be a signaling adapter molecule involved in p75NTR-mediated apoptosis induced by NGF. Plays a role in zinc-triggered neuronal death (By similarity). May play an important role in the pathogenesis of neurogenetic diseases.,miscellaneous:Binds transition metals.,PTM:Ubiquitinated. Degraded by the proteasome.,similarity:Belongs to the BEX family.,subcellular location:Shuttles between the cytoplasm and the nucleus. Associates with replicating mitochondria.,subunit:Self-associates. Interacts with 14-3-3 epsilon (YWHAE). Interacts with DIABLO/SMAC (By similarity). Binds to the DEATH domain of p75NTR/NGFR.,tissue specificity:Found in ovarian granulosa cells, testis, prostate and seminal vesicle tissue. High levels also detected in liver.,



Western blot analysis of lysates from A431 cells, primary antibody was diluted at 1:1000, 4° over night