

KLRF1 rabbit pAb**Cat#: orb773940 (Manual)**

For research use only. Not intended for diagnostic use.

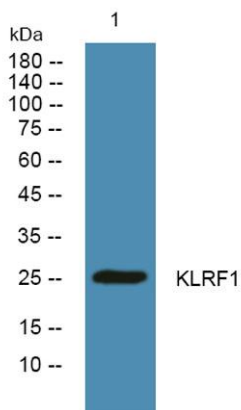
Product Name	KLRF1 rabbit pAb
Host species	Rabbit
Applications	WB;ELISA
Species Cross-Reactivity	Human;Rat;Mouse;
Recommended dilutions	WB 1:500-2000 ELISA 1:5000-20000
Immunogen	Synthesized peptide derived from part region of human protein
Specificity	KLRF1 Polyclonal Antibody detects endogenous levels of protein.
Formulation	Liquid in PBS containing 50% glycerol, and 0.02% sodium azide..
Storage	Store at -20°C. Avoid repeated freeze-thaw cycles.
Protein Name	Killer cell lectin-like receptor subfamily F member 1 (Lectin-like receptor F1) (Activating coreceptor NKp80) (C-type lectin domain family 5 member C)
Gene Name	KLRF1 CLEC5C ML
Cellular localization	Membrane ; Single-pass type II membrane protein .
Purification	The antibody was affinity-purified from rabbit antiserum by affinity-chromatography using epitope-specific immunogen.
Clonality	Polyclonal

Concentration	1 mg/ml
Observed band	25kD
Human Gene ID	51348
Human Swiss-Prot Number	Q9NZS2

Alternative Names

Background

KLRF1, an activating homodimeric C-type lectin-like receptor (CTLR), is expressed on nearly all natural killer (NK) cells and stimulates their cytotoxicity and cytokine release (Kuttruff et al., 2009 [PubMed 18922855]).[supplied by OMIM, Oct 2009],



Western blot analysis of lysates from U2OS cells, primary antibody was diluted at 1:1000, 4° over night