

**S35B2 rabbit pAb****Cat#: orb773644 (Manual)**

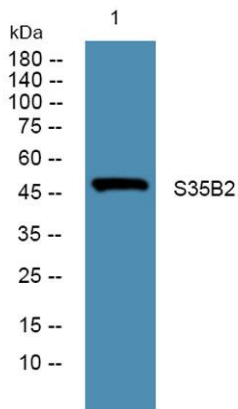
For research use only. Not intended for diagnostic use.

<b>Product Name</b>	S35B2 rabbit pAb
<b>Host species</b>	Rabbit
<b>Applications</b>	WB;ELISA
<b>Species Cross-Reactivity</b>	Human;Mouse
<b>Recommended dilutions</b>	WB 1:500-2000 ELISA 1:5000-20000
<b>Immunogen</b>	Synthesized peptide derived from part region of human protein
<b>Specificity</b>	S35B2 Polyclonal Antibody detects endogenous levels of protein.
<b>Formulation</b>	Liquid in PBS containing 50% glycerol, and 0.02% sodium azide..
<b>Storage</b>	Store at -20°C. Avoid repeated freeze-thaw cycles.
<b>Protein Name</b>	Adenosine 3'-phospho 5'-phosphosulfate transporter 1 (PAPS transporter 1) (Putative MAPK-activating protein PM15) (Putative NF-kappa-B-activating protein 48) (Solute carrier family 35 member B2)
<b>Gene Name</b>	SLC35B2 PAPST1 PSEC0149
<b>Cellular localization</b>	Golgi apparatus membrane ; Multi-pass membrane protein .
<b>Purification</b>	The antibody was affinity-purified from rabbit antiserum by affinity-chromatography using epitope-specific immunogen.
<b>Clonality</b>	Polyclonal

<b>Concentration</b>	1 mg/ml
<b>Observed band</b>	47kD
<b>Human Gene ID</b>	347734
<b>Human Swiss-Prot Number</b>	Q8TB61
<b>Alternative Names</b>	

## Background

Sulfotransferases (e.g., SULT4A1; MIM 608359) use an activated form of sulfate, 3-prime-phosphoadenosine 5-prime-phosphosulfate (PAPS), as a common sulfate donor for sulfation of glycoproteins, proteoglycans, and glycolipids in the endoplasmic reticulum and Golgi apparatus. SLC35B2 is located in the microsomal membrane and transports PAPS from the cytosol, where it is synthesized, into the Golgi lumen (Kamiyama et al., 2003 [PubMed 12716889]).[supplied by OMIM, Mar 2008],



**Western blot analysis of lysates from DU145 cells, primary antibody was diluted at 1:1000, 4°over night**