

HSPB3 rabbit pAb**Cat#: orb773572 (Manual)**

For research use only. Not intended for diagnostic use.

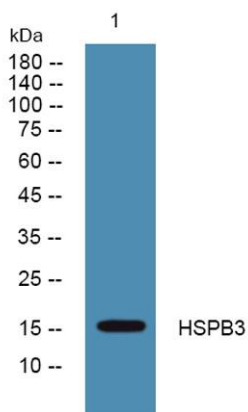
| | |
|---------------------------------|---|
| Product Name | HSPB3 rabbit pAb |
| Host species | Rabbit |
| Applications | WB;ELISA |
| Species Cross-Reactivity | Human;Rat;Mouse; |
| Recommended dilutions | WB 1:500-2000 ELISA 1:5000-20000 |
| Immunogen | Synthesized peptide derived from human protein . at AA range: 30-110 |
| Specificity | HSPB3 Polyclonal Antibody detects endogenous levels of protein. |
| Formulation | Liquid in PBS containing 50% glycerol, and 0.02% sodium azide.. |
| Storage | Store at -20°C. Avoid repeated freeze-thaw cycles. |
| Protein Name | Heat shock protein beta-3 (HspB3) (Heat shock 17 kDa protein) (HSP 17) (Protein 3) |
| Gene Name | HSPB3 HSP27 HSPL27 |
| Cellular localization | Cytoplasm . Nucleus . Translocates to nuclear foci during heat shock. |
| Purification | The antibody was affinity-purified from rabbit antiserum by affinity-chromatography using epitope-specific immunogen. |
| Clonality | Polyclonal |

| | |
|--------------------------------|---------|
| Concentration | 1 mg/ml |
| Observed band | 16kD |
| Human Gene ID | 8988 |
| Human Swiss-Prot Number | Q12988 |

Alternative Names

Background

This gene encodes a muscle-specific small heat shock protein. A mutation in this gene is the cause of autosomal dominant distal hereditary motor neuropathy type 2C.[provided by RefSeq, Sep 2010],



Western blot analysis of lysates from PC12 cells, primary antibody was diluted at 1:1000, 4° over night