

RGS21 rabbit pAb**Cat#: orb773024 (Manual)**

For research use only. Not intended for diagnostic use.

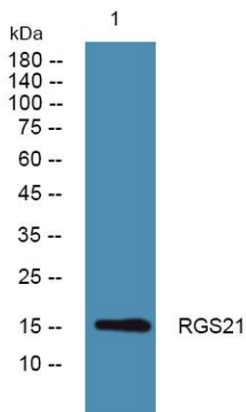
Product Name	RGS21 rabbit pAb
Host species	Rabbit
Applications	WB;ELISA
Species Cross-Reactivity	Human;Rat;Mouse;
Recommended dilutions	WB 1:500-2000 ELISA 1:5000-20000
Immunogen	Synthesized peptide derived from human protein . at AA range: 10-90
Specificity	RGS21 Polyclonal Antibody detects endogenous levels of protein.
Formulation	Liquid in PBS containing 50% glycerol, and 0.02% sodium azide..
Storage	Store at -20°C. Avoid repeated freeze-thaw cycles.
Protein Name	Regulator of G-protein signaling 21 (RGS21)
Gene Name	RGS21
Cellular localization	cytoplasm,plasma membrane,
Purification	The antibody was affinity-purified from rabbit antiserum by affinity-chromatography using epitope-specific immunogen.
Clonality	Polyclonal

Concentration	1 mg/ml
Observed band	16kD
Human Gene ID	431704
Human Swiss-Prot Number	Q2M5E4

Alternative Names

Background

Regulator of G protein signaling (RGS) proteins are regulatory and structural components of G protein-coupled receptor complexes. RGS proteins are GTPase-activating proteins for Gi (see GNAI1; MIM 139310) and Gq (see GNAQ; MIM 600998) class G-alpha proteins. They accelerate transit through the cycle of GTP binding and hydrolysis and thereby accelerate signaling kinetics and termination.[supplied by OMIM, Nov 2008],



Western blot analysis of lysates from HCT116 cells, primary antibody was diluted at 1:1000, 4° over night