

MED30 rabbit pAb**Cat#: orb772666 (Manual)**

For research use only. Not intended for diagnostic use.

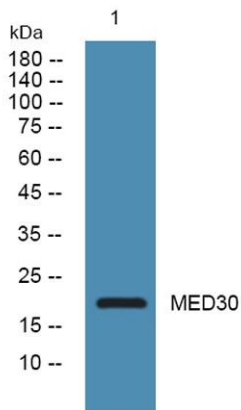
Product Name	MED30 rabbit pAb
Host species	Rabbit
Applications	WB;ELISA
Species Cross-Reactivity	Human;Mouse
Recommended dilutions	WB 1:500-2000 ELISA 1:5000-20000
Immunogen	Synthesized peptide derived from human protein . at AA range: 70-150
Specificity	MED30 Polyclonal Antibody detects endogenous levels of protein.
Formulation	Liquid in PBS containing 50% glycerol, and 0.02% sodium azide..
Storage	Store at -20°C. Avoid repeated freeze-thaw cycles.
Protein Name	Mediator of RNA polymerase II transcription subunit 30 (Mediator complex subunit 30) (TRAP/Mediator complex component TRAP25) (Thyroid hormone receptor-associated protein 6) (Thyroid hormone receptor-
Gene Name	MED30 THRAP6 TRAP25
Cellular localization	Nucleus .
Purification	The antibody was affinity-purified from rabbit antiserum by affinity-chromatography using epitope-specific immunogen.
Clonality	Polyclonal

Concentration	1 mg/ml
Observed band	19kD
Human Gene ID	90390
Human Swiss-Prot Number	Q96HR3

Alternative Names

Background

The multiprotein TRAP/Mediator complex facilitates gene expression through a wide variety of transcriptional activators. MED30 is a component of this complex that appears to be metazoan specific (Baek et al., 2002 [PubMed 11909976]).¹[supplied by OMIM, Nov 2010],



Western blot analysis of lysates from PC12 cells, primary antibody was diluted at 1:1000, 4° over night