

**KRT34 rabbit pAb****Cat#: orb772067 (Manual)**

For research use only. Not intended for diagnostic use.

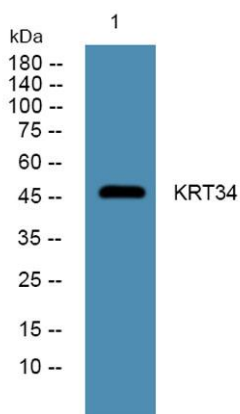
<b>Product Name</b>	KRT34 rabbit pAb
<b>Host species</b>	Rabbit
<b>Applications</b>	WB;ELISA
<b>Species Cross-Reactivity</b>	Human;Rat;Mouse;
<b>Recommended dilutions</b>	WB 1:500-2000 ELISA 1:5000-20000
<b>Immunogen</b>	Synthesized peptide derived from human protein . at AA range: 120-200
<b>Specificity</b>	KRT34 Polyclonal Antibody detects endogenous levels of protein.
<b>Formulation</b>	Liquid in PBS containing 50% glycerol, and 0.02% sodium azide..
<b>Storage</b>	Store at -20°C. Avoid repeated freeze-thaw cycles.
<b>Protein Name</b>	Keratin, type I cuticular Ha4 (Hair keratin, type I Ha4) (Keratin-34) (K34)
<b>Gene Name</b>	KRT34 HHA4 HKA4 KRTHA4
<b>Cellular localization</b>	extracellular space,intermediate filament,extracellular exosome,
<b>Purification</b>	The antibody was affinity-purified from rabbit antiserum by affinity-chromatography using epitope-specific immunogen.
<b>Clonality</b>	Polyclonal

<b>Concentration</b>	1 mg/ml
<b>Observed band</b>	47kD
<b>Human Gene ID</b>	100653049
<b>Human Swiss-Prot Number</b>	O76011

#### Alternative Names

#### Background

The protein encoded by this gene is a member of the keratin gene family. As a type I hair keratin, it is an acidic protein which heterodimerizes with type II keratins to form hair and nails. The type I hair keratins are clustered in a region of chromosome 17q12-q21 and have the same direction of transcription. [provided by RefSeq, Jul 2008],



**Western blot analysis of lysates from DU145 cells, primary antibody was diluted at 1:1000, 4° over night**