

VSX2 rabbit pAb**Cat#: orb771918 (Manual)**

For research use only. Not intended for diagnostic use.

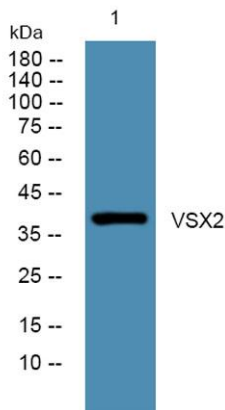
Product Name	VSX2 rabbit pAb
Host species	Rabbit
Applications	WB;ELISA
Species Cross-Reactivity	Human;Mouse
Recommended dilutions	WB 1:500-2000 ELISA 1:5000-20000
Immunogen	Synthesized peptide derived from human protein . at AA range: 70-150
Specificity	VSX2 Polyclonal Antibody detects endogenous levels of protein.
Formulation	Liquid in PBS containing 50% glycerol, and 0.02% sodium azide..
Storage	Store at -20°C. Avoid repeated freeze-thaw cycles.
Protein Name	Visual system homeobox 2 (Ceh-10 homeodomain-containing homolog) (Homeobox protein CHX10)
Gene Name	VSX2 CHX10 HOX10
Cellular localization	Nucleus .
Purification	The antibody was affinity-purified from rabbit antiserum by affinity-chromatography using epitope-specific immunogen.
Clonality	Polyclonal

Concentration	1 mg/ml
Observed band	39kD
Human Gene ID	338917
Human Swiss-Prot Number	P58304

Alternative Names

Background

This gene encodes a homeobox protein originally described as a retina-specific transcription factor. Mutations in this gene are associated with microphthalmia, cataracts and iris abnormalities. [provided by RefSeq, Oct 2009],



Western blot analysis of lysates from PC12 cells, primary antibody was diluted at 1:1000, 4° over night