

**SYK (Phospho-Tyr348) Antibody****Cat#: orb771750 (Manual)**

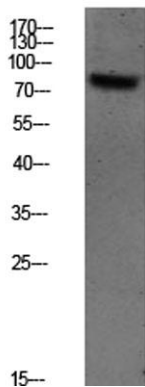
For research use only. Not intended for diagnostic use.

<b>Product Name</b>	SYK (Phospho-Tyr348) Antibody
<b>Host species</b>	Rabbit
<b>Applications</b>	WB;ELISA;IHC
<b>Species Cross-Reactivity</b>	Human;Mouse;Rat
<b>Recommended dilutions</b>	WB 1:500-2000;IHC-p 1:50-300; ELISA 2000-20000
<b>Immunogen</b>	Synthesized phospho derived from human SYK (Phospho-Tyr348)
<b>Specificity</b>	This detects endogenous levels of SYK (Phospho-Tyr348)
<b>Formulation</b>	Liquid in PBS containing 50% glycerol, 0.5% BSA and 0.02% sodium azide..
<b>Storage</b>	Store at -20°C. Avoid repeated freeze-thaw cycles.
<b>Protein Name</b>	Tyrosine-protein kinase SYK (EC 2.7.10.2) (Spleen tyrosine kinase) (p72-Syk)
<b>Gene Name</b>	SYK
<b>Cellular localization</b>	Cell membrane . Cytoplasm, cytosol .
<b>Purification</b>	The antibody was affinity-purified from rabbit antiserum by affinity-chromatography using epitope-specific immunogen.
<b>Clonality</b>	Polyclonal

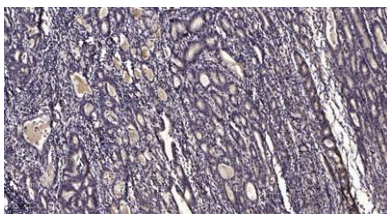
<b>Concentration</b>	1 mg/ml
<b>Observed band</b>	82kD
<b>Human Gene ID</b>	6850
<b>Human Swiss-Prot Number</b>	P43405
<b>Alternative Names</b>	Tyrosine-protein kinase SYK (EC 2.7.10.2) (Spleen tyrosine kinase) (p72-Syk)

## Background

This gene encodes a member of the family of non-receptor type Tyr protein kinases. This protein is widely expressed in hematopoietic cells and is involved in coupling activated immunoreceptors to downstream signaling events that mediate diverse cellular responses, including proliferation, differentiation, and phagocytosis. It is thought to be a modulator of epithelial cell growth and a potential tumour suppressor in human breast carcinomas. Alternatively spliced transcript variants encoding different isoforms have been found for this gene. [provided by RefSeq, Mar 2010],



Western blot analysis of CACO2 lysate, antibody was diluted at 1000. Secondary antibody(catalog#:RS0002) was diluted at 1:20000



Immunohistochemical analysis of paraffin-embedded human Gastric adenocarcinoma. 1, Antibody was diluted at 1:200(4° overnight). 2, Tris-EDTA,pH9.0 was used for antigen retrieval. 3,Secondary antibody was diluted at 1:200(room temperature, 45min).



Explore. Bioreagents.

[www.biorbyt.com](http://www.biorbyt.com)