

**eEF2 (Phospho-Thr56) Antibody****Cat#: orb771749 (Manual)**

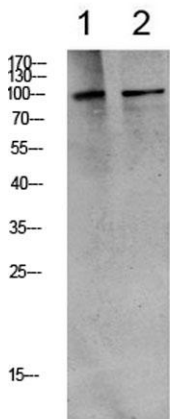
For research use only. Not intended for diagnostic use.

<b>Product Name</b>	eEF2 (Phospho-Thr56) Antibody
<b>Host species</b>	Rabbit
<b>Applications</b>	WB;ELISA
<b>Species Cross-Reactivity</b>	Human;Mouse;Rat
<b>Recommended dilutions</b>	WB 1:500-2000, ELISA 1:10000-20000
<b>Immunogen</b>	Synthesized phospho derived from human eEF2 (Phospho-Thr56)
<b>Specificity</b>	This detects endogenous levels of eEF2 (Phospho-Thr56)
<b>Formulation</b>	Liquid in PBS containing 50% glycerol, 0.5% BSA and 0.02% sodium azide..
<b>Storage</b>	Store at -20°C. Avoid repeated freeze-thaw cycles.
<b>Protein Name</b>	Elongation factor 2 (EF-2)
<b>Gene Name</b>	EEF2 EF2
<b>Cellular localization</b>	Cytoplasm . Nucleus . Phosphorylation by CSK promotes cleavage and SUMOylation-dependent nuclear translocation of the C-terminal cleavage product. .
<b>Purification</b>	The antibody was affinity-purified from rabbit antiserum by affinity-chromatography using epitope-specific immunogen.

<b>Clonality</b>	Polyclonal
<b>Concentration</b>	1 mg/ml
<b>Observed band</b>	100kD
<b>Human Gene ID</b>	1938
<b>Human Swiss-Prot Number</b>	P13639
<b>Alternative Names</b>	Elongation factor 2 (EF-2)

## Background

This gene encodes a member of the GTP-binding translation elongation factor family. This protein is an essential factor for protein synthesis. It promotes the GTP-dependent translocation of the nascent protein chain from the A-site to the P-site of the ribosome. This protein is completely inactivated by EF-2 kinase phosphorylation. [provided by RefSeq, Jul 2008].



1 3

2 H Western blot analysis of various lysate, antibody was diluted at 1000. Secondary antibody(catalog#:RS0002) was diluted at 1:20000